



Slice Collection

Designed by Ransom Culler

Leg Options

Stainless steel with metal finishes.

Custom powder coat finish - call for pricing.

Ganging Brackets Standard.

Upholstery Options

Contrasting fabrics of different grades - use higher grade pricing

Same grade fabric combination - 160

Contrasting welt - 160

For COM, refer to COM form for fabric application details.

Cushion Options

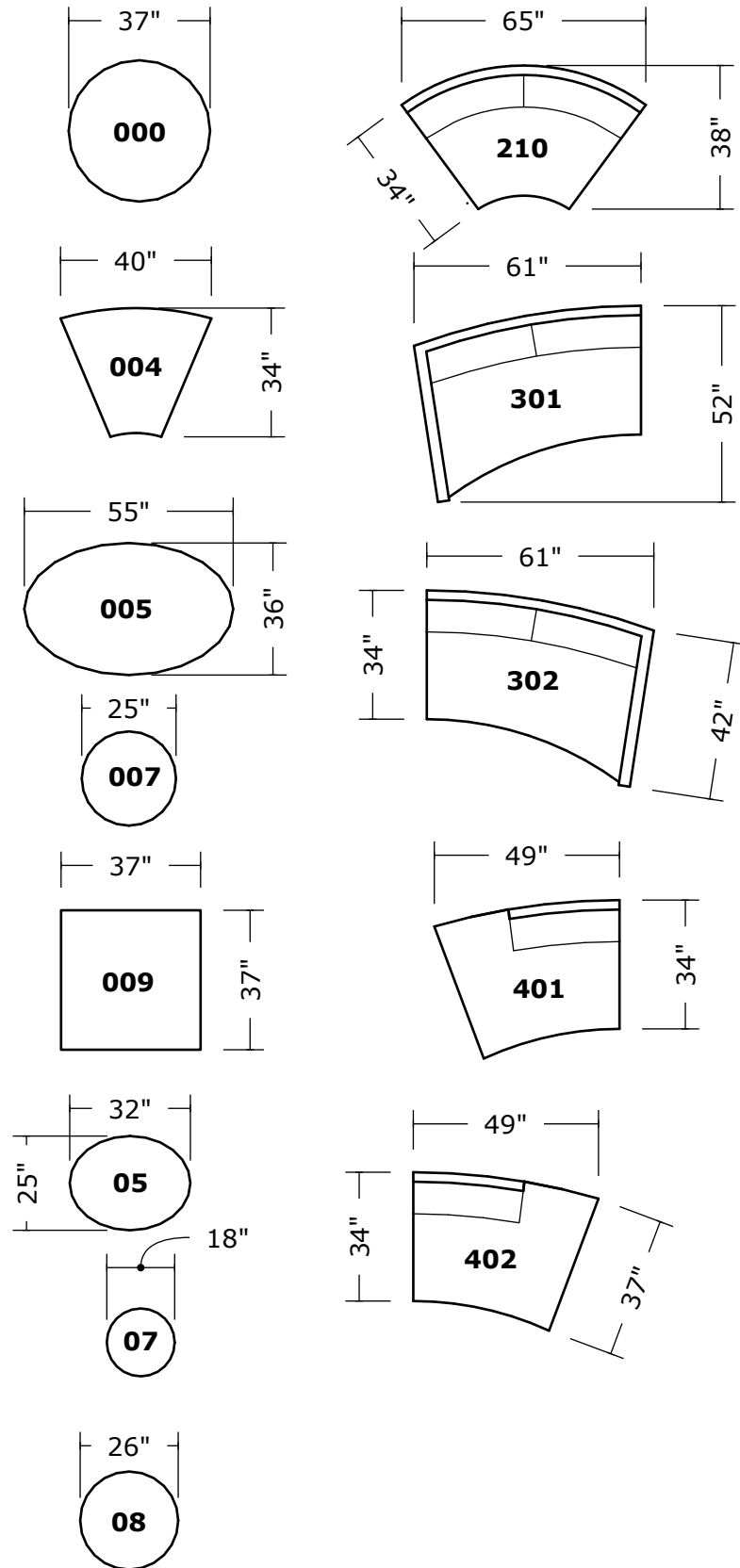
2.5 density Polyblendown seat and back is standard.

Down may be swapped for synthetic fiber upon request.

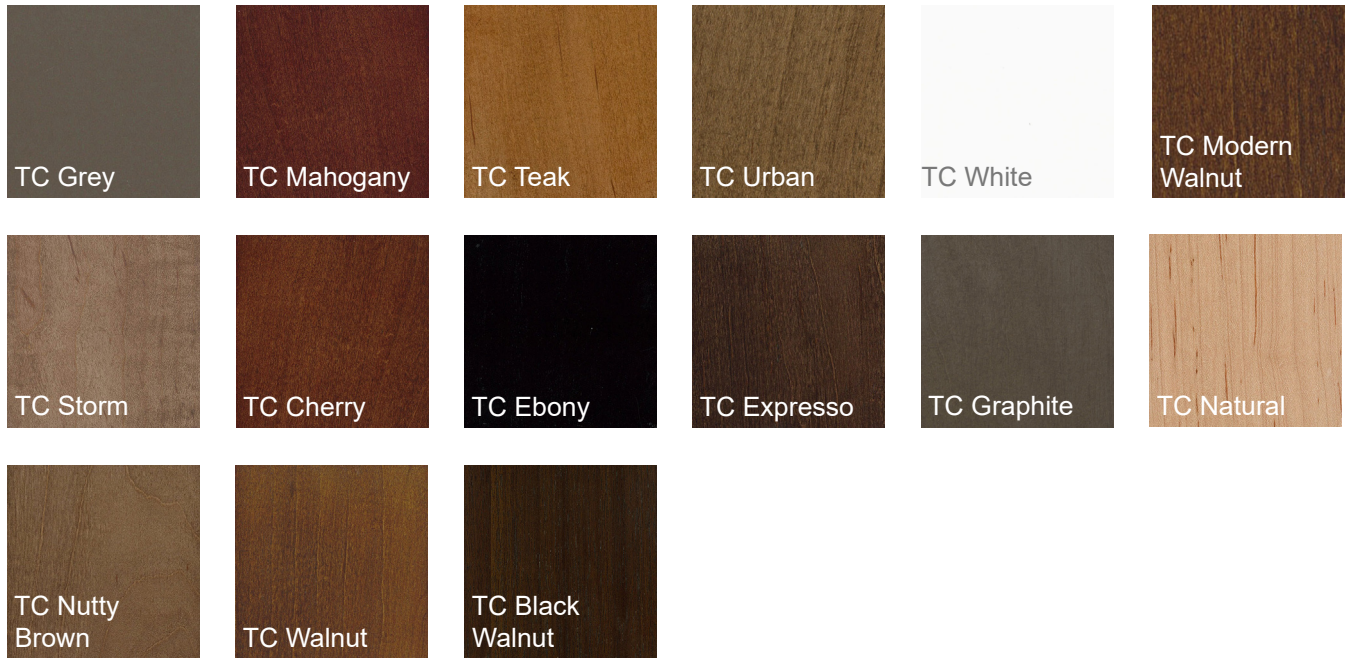
Extra firm cushioning - 160

Tray Options

Maple wood trays are available in any TC maple wood finish.

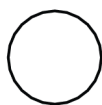


Maple Wood Finish Options



Metal Finish Options





Slice Round Ottoman

Polyblendown Seat

Model No.	W x D x H in	Seat Depth	Seat Height	Arm Height	Ydg	SqFt	lbs
C1431-000	Dia36 x H15	36	15	N/A	3.5	70	80

Finish	COM	COL	AA	BB	CC	DD	EE	FF	GG	HH
C1431-000-PS Polished Stainless	3198	3610	3610	4074	4539	5038	5539	6040	6540	7041
C1431-000-DB Dark Bronze	3508	3922	3922	4385	4848	5352	5855	6353	6864	7366
C1431-000-BPC Black Powder Coat	3508	3922	3922	4385	4848	5352	5855	6353	6864	7366
C1431-000-GPC Grey Powder Coat	3508	3922	3922	4385	4848	5352	5855	6353	6864	7366
C1431-000-WPC White Powder Coat	3508	3922	3922	4385	4848	5352	5855	6353	6864	7366

***For wood base, must specify wood finish.**



Slice Wedge Ottoman

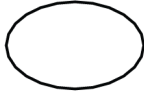
Polyblendown Seat

Fits Slice Sectional Pieces

Model No.	W x D x H in	Seat Depth	Seat Height	Arm Height	Ydg	SqFt	lbs
C1431-004	39 x 35 x 17.5	35	17.5	N/A	5	100	80

Finish	COM	COL	AA	BB	CC	DD	EE	FF	GG	HH
C1431-004-PS Polished Stainless	3095	3405	3405	3765	4127	4601	5075	5550	6010	6499
C1431-004-DB Dark Bronze	3405	3714	3714	4074	4435	4913	5391	5869	6346	6824
C1431-004-BPC Black Powder Coat	3405	3714	3714	4074	4435	4913	5391	5869	6346	6824
C1431-004-GPC Grey Powder Coat	3405	3714	3714	4074	4435	4913	5391	5869	6346	6824
C1431-004-WPC White Powder Coat	3405	3714	3714	4074	4435	4913	5391	5869	6346	6824

Slice Oval Ottoman



Polyblendown Seat

Model No.	W x D x H in	Seat Depth	Seat Height	Arm Height	Ydg	SqFt	lbs
C1431-005	55 x 36 x 15	36	15	N/A	7	140	60

Finish	COM	COL	AA	BB	CC	DD	EE	FF	GG	HH
C1431-005-PS Polished Stainless	3198	3610	3610	4074	4539	5038	5545	6040	6540	7041
C1431-005-DB Dark Bronze	3508	3922	3922	4385	4848	5352	5855	6359	6864	7366
C1431-005-BPC Black Powder Coat	3508	3922	3922	4385	4848	5352	5855	6359	6864	7366
C1431-005-GPC Grey Powder Coat	3508	3922	3922	4385	4848	5352	5855	6359	6864	7366
C1431-005-WPC White Powder Coat	3508	3922	3922	4385	4848	5352	5855	6359	6864	7366

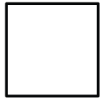
Slice Small Round Ottoman



Polyblendown Seat

Model No.	W x D x H in	Seat Depth	Seat Height	Arm Height	Ydg	SqFt	lbs
C1431-007	Dia24 x H15	36	15	N/A	3.5	70	60

Finish	COM	COL	AA	BB	CC	DD	EE	FF	GG	HH
C1431-007-PS Polished Stainless	2580	2785	2785	3033	3280	3664	4049	4432	4817	5199
C1431-007-DB Dark Bronze	2888	3095	3095	3343	3590	235	4364	4751	5129	5524
C1431-007-BPC Black Powder Coat	2888	3095	3095	3343	3590	235	4364	4751	5129	5524
C1431-007-GPC Grey Powder Coat	2888	3095	3095	3343	3590	235	4364	4751	5129	5524
C1431-007-WPC White Powder Coat	2888	3095	3095	3343	3590	235	4364	4751	5129	5524



Slice Square Ottoman

Polyblendown Seat

Model No.	W x D x H in	Seat Depth	Seat Height	Arm Height	Ydg	SqFt	lbs
C1431-009	36 x 36 x 15	36	15	N/A	3.5	70	60

Finish	COM	COL	AA	BB	CC	DD	EE	FF	GG	HH
C1431-009-PS Polished Stainless	2867	3198	3198	3560	3922	4395	4868	5339	5811	6282
C1431-009-DB Dark Bronze	3178	3508	3508	3870	4230	4705	5180	5655	6130	6607
C1431-009-BPC Black Powder Coat	3178	3508	3508	3870	4230	4705	5180	5655	6130	6607
C1431-009-GPC Grey Powder Coat	3178	3508	3508	3870	4230	4705	5180	5655	6130	6607
C1431-009-WPC White Powder Coat	3178	3508	3508	3870	4230	4705	5180	5655	6130	6607



Slice Oval Wood Tray

Must specify wood finish.

Model No.	W x D x H in	lbs	Cost
C1431-05-W	32 x 25 x 1.25	15	1590



Slice Round Wood Tray 18"

Must specify wood finish.

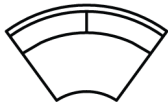
Model No.	W x D x H in	lbs	Cost
C1431-07-W	Dia18 x H1.25	15	723



Slice Round Wood Tray 26"

Must specify wood finish.

Model No.	W x D x H in	lbs	Cost
C1431-08-W	Dia26 x H1.25	15	1486

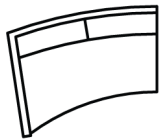


Slice Curve

Polyblendown Seat
Blendown Back

Model No.	W x D x H in	Seat Depth	Seat Height	Arm Height	Ydg	SqFt	lbs
C1431-210	65 x 35 x 27	23 - 32	17	27	13	260	200

Finish	COM	COL	AA	BB	CC	DD	EE	FF	GG	HH
C1431-210-PS Polished Stainless	5983	6706	6706	7633	8562	9791	11021	12252	13482	14707
C1431-210-DB Dark Bronze	6293	7015	7015	7943	8872	10104	11337	12569	13802	15033
C1431-210-BPC Black Powder Coat	6293	7015	7015	7943	8872	10104	11337	12569	13802	15033
C1431-210-GPC Grey Powder Coat	6293	7015	7015	7943	8872	10104	11337	12569	13802	15033
C1431-210-WPC White Powder Coat	6293	7015	7015	7943	8872	10104	11337	12569	13802	15033



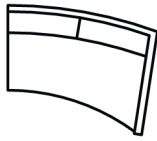
Slice Left Arm Facing

(2) Square Arm
Pillows Standard

Polyblendown Seat
Blendown Back

Model No.	W x D x H in	Seat Depth	Seat Height	Arm Height	Ydg	SqFt	lbs
C1431-301	61 x 35 x 27	23 - 32	17	27	17	340	160

Finish	COM	COL	AA	BB	CC	DD	EE	FF	GG	HH
C1431-301-PS Polished Stainless	7324	8230	8230	9469	10707	12287	13868	16198	17029	18607
C1431-301-DB Dark Bronze	7633	8542	8542	9778	11018	12602	14183	15766	17349	18932
C1431-301-BPC Black Powder Coat	7633	8542	8542	9778	11018	12602	14183	15766	17349	18932
C1431-301-GPC Grey Powder Coat	7633	8542	8542	9778	11018	12602	14183	15766	17349	18932
C1431-301-WPC White Powder Coat	7633	8542	8542	9778	11018	12602	14183	15766	17349	18932



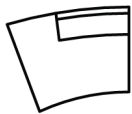
Slice Left Arm Facing

(2) Square Arm
Pillows Standard

Polyblendown Seat
Blendown Back

Model No.	W x D x H in	Seat Depth	Seat Height	Arm Height	Ydg	SqFt	lbs
C1431-302	61 x 35 x 27	23 - 32	17	27	17	340	160

Finish	COM	COL	AA	BB	CC	DD	EE	FF	GG	HH
C1431-302-PS Polished Stainless	7324	8230	8230	9469	10707	12287	13868	16198	17029	18607
C1431-302-DB Dark Bronze	7633	8542	8542	9778	11018	12602	14183	15766	17349	18932
C1431-302-BPC Black Powder Coat	7633	8542	8542	9778	11018	12602	14183	15766	17349	18932
C1431-302-GPC Grey Powder Coat	7633	8542	8542	9778	11018	12602	14183	15766	17349	18932
C1431-302-WPC White Powder Coat	7633	8542	8542	9778	11018	12602	14183	15766	17349	18932

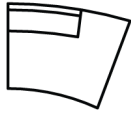


Slice Left Chaise

Polyblendown Seat
Blendown Back

Model No.	W x D x H in	Seat Depth	Seat Height	Arm Height	Ydg	SqFt	lbs
C1431-401	49 x 37 x 27	23 - 32	17	27	12	240	140

Finish	COM	COL	AA	BB	CC	DD	EE	FF	GG	HH
C1431-401-PS Polished Stainless	5777	6397	6397	7273	8149	9287	10426	11565	12705	13841
C1431-401-DB Dark Bronze	6085	6706	6706	7582	8460	9600	10742	11883	13025	14167
C1431-401-BPC Black Powder Coat	6085	6706	6706	7582	8460	9600	10742	11883	13025	14167
C1431-401-GPC Grey Powder Coat	6085	6706	6706	7582	8460	9600	10742	11883	13025	14167
C1431-401-WPC White Powder Coat	6085	6706	6706	7582	8460	9600	10742	11883	13025	14167



Slice Right Chaise

Polyblendown Seat
Blendown Back

Model No.	W x D x H in	Seat Depth	Seat Height	Arm Height	Ydg	SqFt	lbs
C1431-402	49 x 37 x 27	23 - 32	17	27	12	240	140

Finish	COM	COL	AA	BB	CC	DD	EE	FF	GG	HH
C1431-402-PS Polished Stainless	5777	6397	6397	7273	8149	9287	10426	11565	12705	13841
C1431-402-DB Dark Bronze	6085	6706	6706	7582	8460	9600	10742	11883	13025	14167
C1431-402-BPC Black Powder Coat	6085	6706	6706	7582	8460	9600	10742	11883	13025	14167
C1431-402-GPC Grey Powder Coat	6085	6706	6706	7582	8460	9600	10742	11883	13025	14167
C1431-402-WPC White Powder Coat	6085	6706	6706	7582	8460	9600	10742	11883	13025	14167